

FISHWAY STATUS REPORT

Date: 4/19/2015
Inspection Period: 4/12 thru 4/18/2015

All JD Fishways are inspected twice per day during fish season, Mar. 1 - Nov. 30
 Frequent monitoring of the PLC displays in SMF Fisheries Office as necessary.



JOHN DAY DAM

JD/WC Project-Fisheries
 P.O. Box 823
 Rufus, Oregon 97050
 Phone: 541-506-7860

John Day Dam	Inspections	Criteria	Total Number of Inspections: 14	Temperature: 49 F
	Out of Criteria	Limit		Secchi: 5.9 Ft.
NORTH FISHWAY			5 out of 6 AWS pumps available since 12/23/14	
Exit differential	0	≤ 0.5'		
Exit Control weirs	0	High setting	High setting is normal for JDN	
Count station differential	0	≤ 0.3'		
Weir crest depth (DS gauge)	0	1.0' ± 0.1'		
Entrance differential	0	1.0' - 2.0'	AVG 1.5	
SOUTH FISHWAY			3 AWS Turbines in regular service since 2/28/15	
Exit differential	0	≤ 0.5'		
Exit Control weirs	0	Mid Setting	Mid setting is normal for JDS	
Count station differential	0	≤ 0.3'		
Weir crest depth (US gauge)	0	1.0' ± 0.1'		
South entrance differential	0	1.0' - 2.0'	AVG 1.4	
Entrance weir SE1	0	depth (≥ 8')	AVG 8.6	
Collection channel velocity	0	1.5 - 4 fps	AVG 3.21	
N. Entrance PH(Bay 19)differential	0	1.0' - 2.0'	AVG 1.5	
Entrance weir NE1	0	depth (≥ 8')	AVG 8.9	
Entrance weir NE2	0	depth (≥ 8')	AVG 8.9	
JUVENILE PASSAGE			In regular service with all necessary STSs since 3/23	
Forebay/bypass conduit differential	0	4.0' - 5.0'	AVG 4.6	
Submersible traveling screens	0	visual inspect	Monthly STS underwater camera inspection completed by 4/23 as scheduled	
Turbine trashrack drawdown	0	<1.5', wkly	Monthly trashrack raking scheduled for week 4/27	
Vert barrier screen drawdown	0	<1.5', wkly		
Spill volume	0	30/40 %	Fish spill and TSWs started up on 4/10/15 per FOP	
Spill pattern	0	per FPP	Per 2015 FOP	
Turbine Unit Priority	0	per FPP		
Turbine 1% Efficiency	0	per FPP		

SMOLT MONITORING FACILITY

Operation: SMF in sampling mode since 3/31 AM. 24 hrs/ 7 days a week sampling by PSMFC as required by FPP.

JD Fisheries crew continues 24/7 swing shift schedule as required by FPP; it will continue this until the end of sampling season on 9/15.

Maintenance: All devices working well without any issues at this time

Research: N/A

None

Fallbacks: AVG: 21 MAX: 29 MIN: 18

OTHER ISSUES:**JOHN DAY**

BIRDS : see the Avian Numbers tab. We report all species and locations, but in reality only gulls in the tailrace BRZ are relevant at JD.

JD Tailrace BRZ Avian Grid will be missing two across river lines # 26 & 27; JD Engineering was unable to reinstall them due to contracting issues.

It is impossible to predict if gulls will penetrate the grid through this gap; JD Fisheries will monitor and report on an increased predation if any results.

JD Engineering preparing to issue an improved/ multi- year contract for the lines maintenance during the next winter outage, in February 2016.

USADA avian hazing from a boat began 4/16

Operations:

JD North Fishway in regular service; 5 out of 6 AWS pumps are available. Repair work on pump 4 continues; pump 3 has vibration issues and should be the last in service. JBS in regular service since 3/27.

JD South Fishway in regular service with 3 AWS Turbines; it is meeting the optimal FPP criteria.

Maintenance:

JD North AWS pumps - five out of total six are available. Repair of AWS pump # 4 by a contractor started on 1/26 & is ongoing.

STS at MU8 found failed; due to bad motor on 4/07 PM. Immediately replaced with working spare. Kudos to JD Ops and Structural for quick work !

Monthly STS inspection found four bad STSs; most tears were minor and repaired on the spot. One STS was replaced with working spare on 4/22.

Calibration: All sensors were within the criteria of 0.3' .

Research:

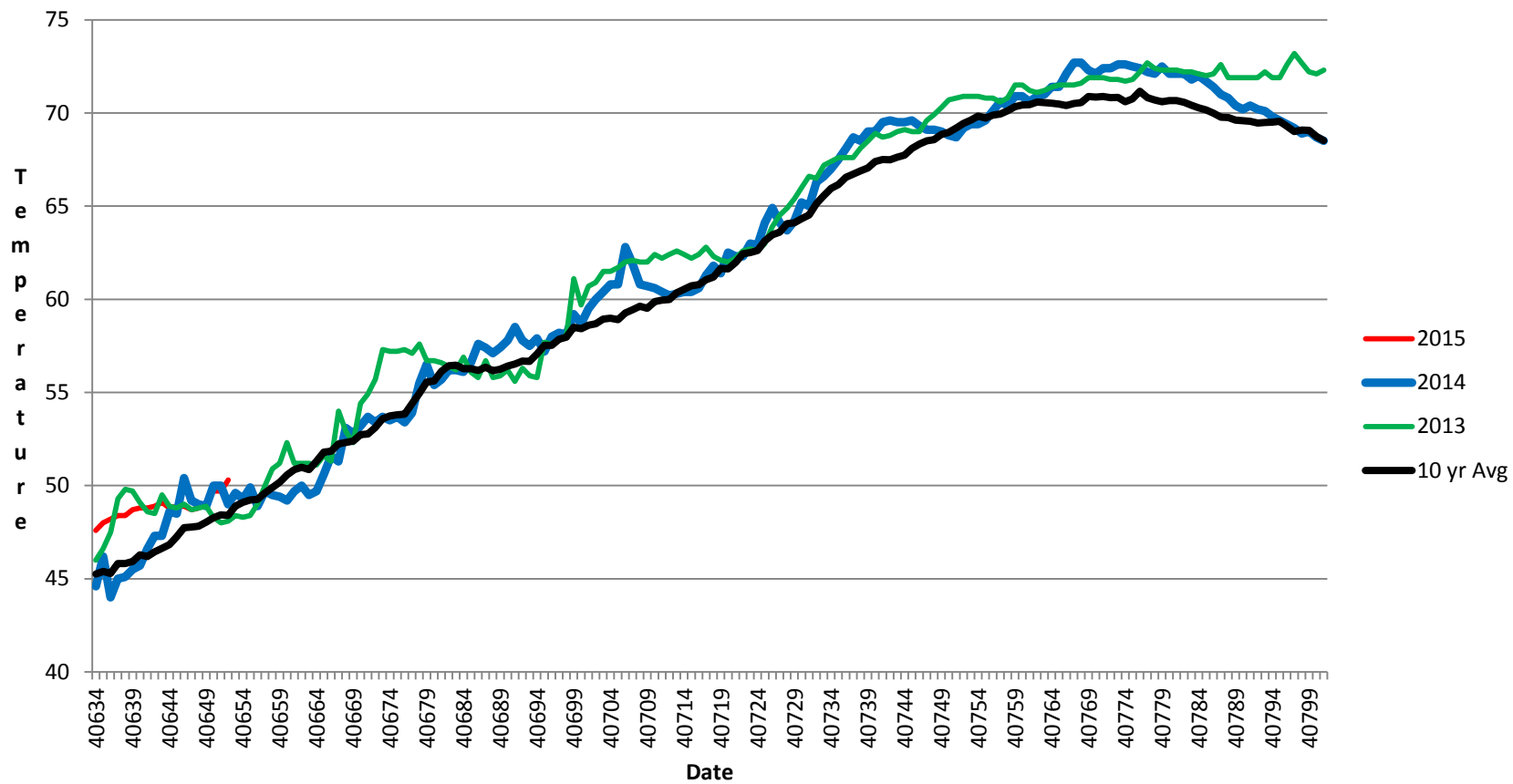
2015 Adult Fish Counting by Normandeau Associates commenced on 1 April, 2015.

Adult Salmonids Radio telemetry evaluations are ongoing at both JD adult fishway. University of Idaho crew is in charge of detecting of all adult salmonids, which were tagged and released at Bonneville Dam. They may conclude these operations mid-May

Kevin Moynahan
OPM John Day/Willow Creek Project

Date: 25-Apr-15

JDA SMF Water Temp



JDA Collection Channel Velocity

Date 9-Apr-15

By: ML

Bay(s)	Time	Sec.	Velocity (f/s)
0-2	1:12	72	2.50
2 - 4	2:07	127	3.27
4 - 6	3:02	182	3.27
6 - 8	3:59	239	3.16
8 - 10	5:00	300	2.95
10 - 12	5:50	350	3.60
12 - 14	6:49	409	3.05
14 - 16	7:46	466	3.16
16 - 18	8:32	512	3.91
			3.21

2015 JDA Piscivorous Bird Counts

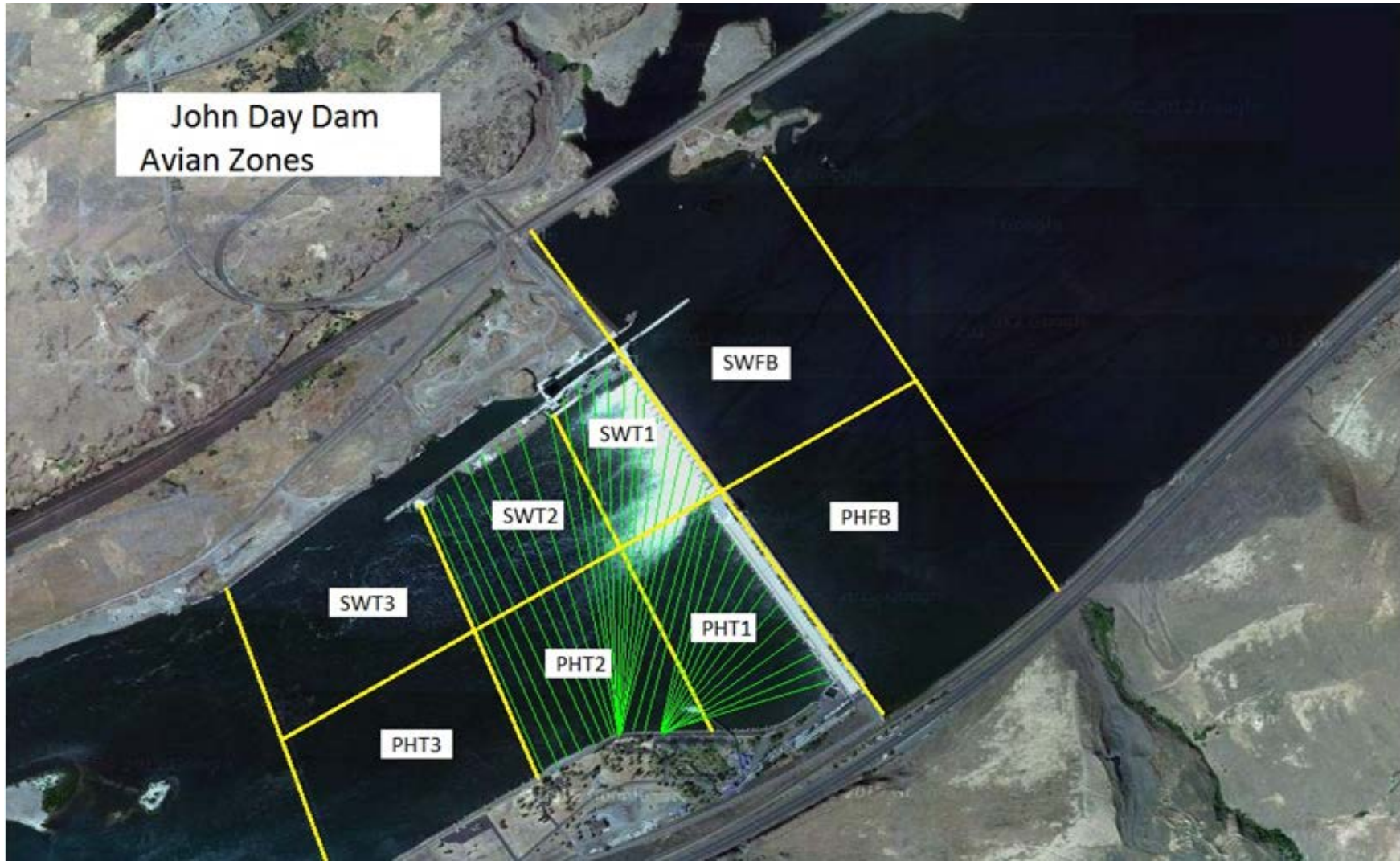
(F=foraging, NF=non-foraging)

Total Avian Bird Counts for the Week of April 12th- April 18th

	Gull		Cormorant		Caspian tern		Pelican		Grebe		Total
	F	NF	F	NF	F	NF	F	NF	F	NF	
PHFB	1	4	0	0	0	0	0	0	177	224	406
SWFB	1	14	0	0	0	0	0	0	0	0	15
PH1	0	0	0	0	0	0	0	0	0	0	0
PH2	1	1	0	0	0	0	0	0	0	0	2
PH3	18	0	0	0	0	0	0	0	0	0	18
SW1	0	0	0	0	0	0	0	0	0	0	0
SW2	0	0	0	2	0	0	0	0	0	0	2
SW3	6	2	0	0	0	0	0	0	0	0	8
Total	27	21	0	2	0	0	0	0	177	224	451
MOS	11		2		0		0		47		X

MOS = Most Observations during one Survey

John Day Dam
Avian Zones



John Day Weekly Averages

	Temp:	Secchi:	Fallbacks
Sun	49	6.0	19
Mon	48	6.0	19
Tues	49	6.0	18
Wed	49	6.0	29
Thur	49	5.5	22
Fri	49	5.5	19
Sat	49	6.0	24
AVG:	49	AVG: 5.9	AVG 21
			MAX 29
			MIN 18

	NE1	NE2	S.Ent	SE1	N.Ent	JBS Diff	Bay19
Sun	8.7	8.9	1.0	8.5	1.6	4.6	1.7
Sun	9.2	9.3	1.4	8	1.5	4.7	1.2
Mon	9.0	9.0	1.4	8.6	1.4	4.6	1.5
Mon	8.2	8.1	1.5	8.1	1.6	4.6	1.4
Tues	8.2	8.2	1.7	8.2	1.5	4.6	1.6
Tues	8.2	8.0	1.2	8.2	1.6	4.6	1.4
Wed	8.5	8.5	1.6	8.2	1.4	4.6	1.6
Wed	8.2	8.4	1.1	8.8	1.5	4.5	1.4
Thur	10.1	10.3	1.2	8.1	1.5	4.6	1.4
Thur	10.5	10.5	1.2	9.6	1.7	4.5	1.4
Fri	9.1	9.1	1.3	10	1.3	4.6	1.4
Fri	9.5	9.5	1.5	8.4	1.6	4.5	1.5
Sat	8.8	8.8	1.4	9	1.6	4.6	1.5
Sat	8.2	8.2	1.7	8.4	1.6	4.5	1.5
AVG:	8.9	8.9	1.4	8.6	1.5	4.6	1.5